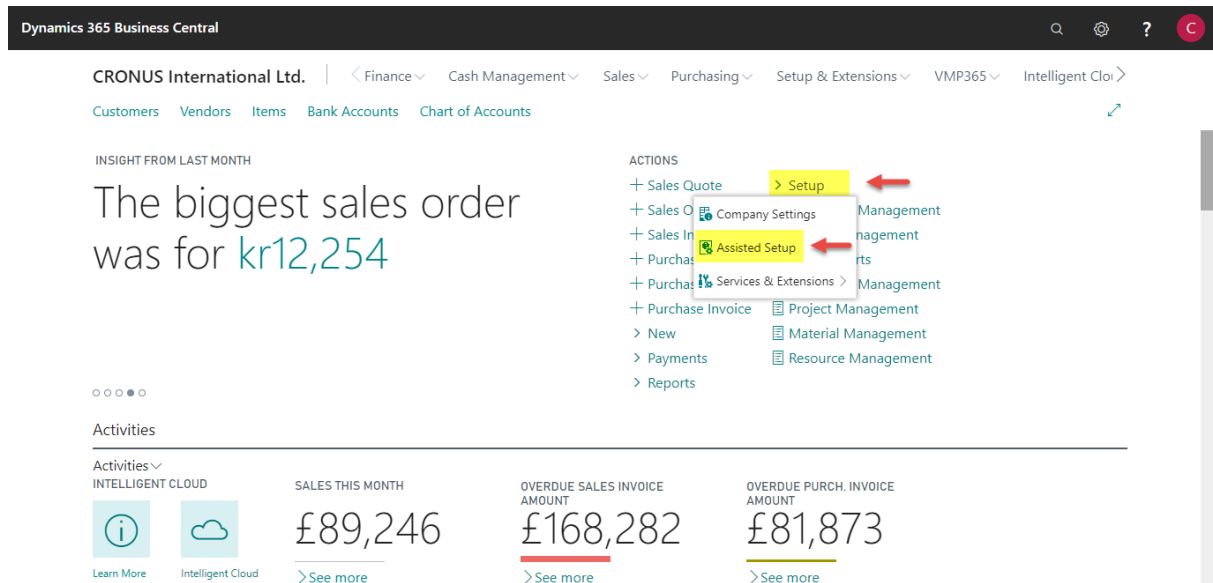


# NAVBUILD Assisted Setup

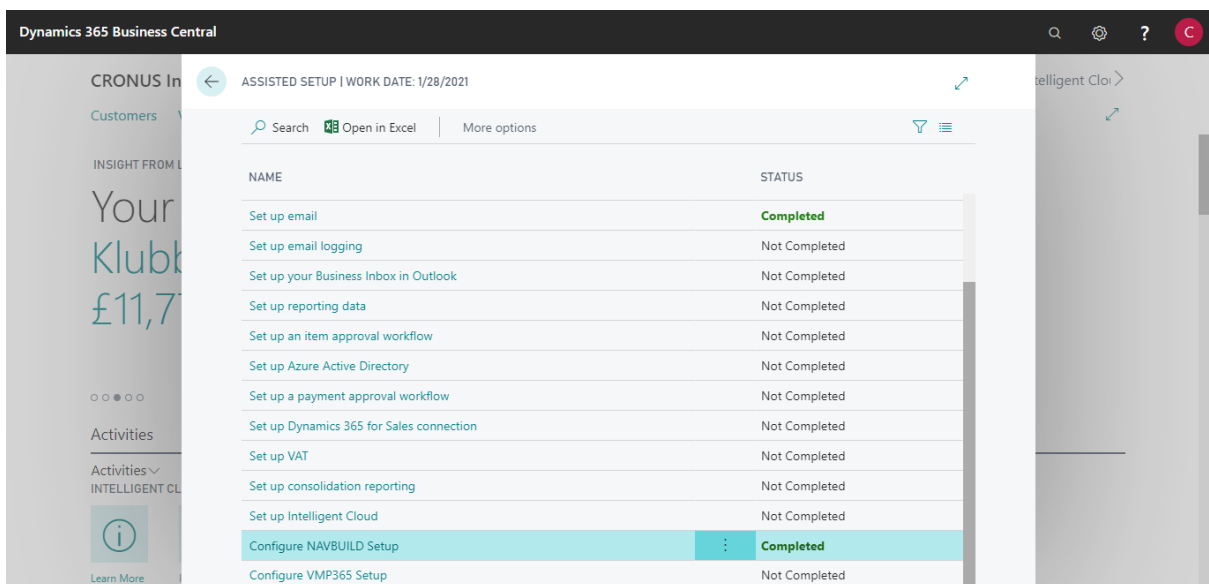
Before getting started with NAVBUILD it is important to setup the configuration of NAVBUILD

## Guidelines

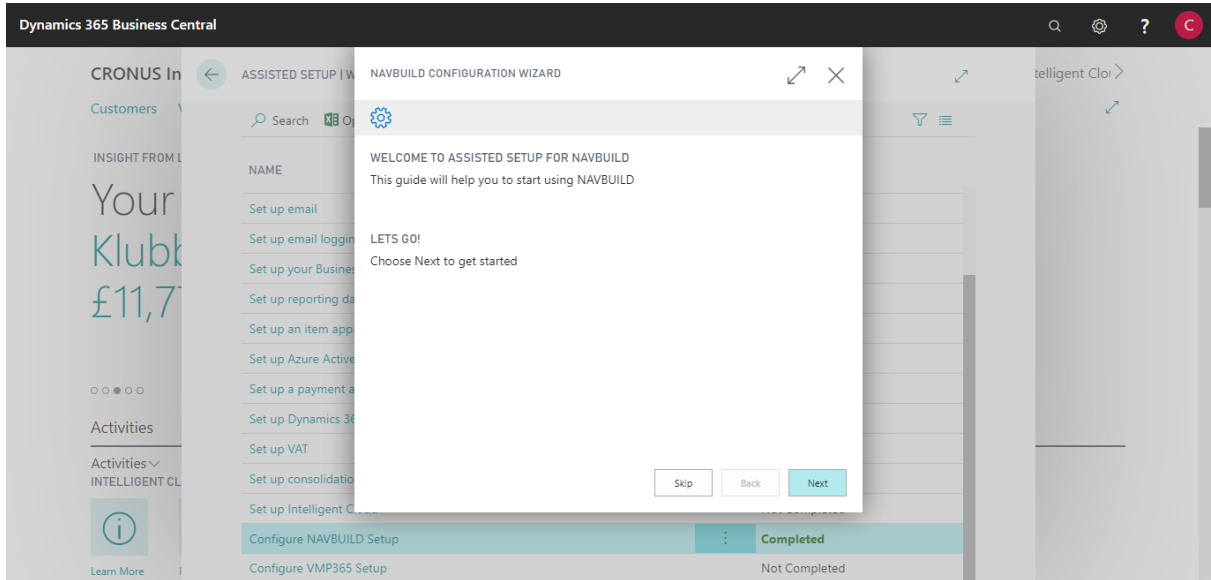
- **Step 1:** Go to 'Setup' → Assisted Setup or Search 'Assisted Setup'



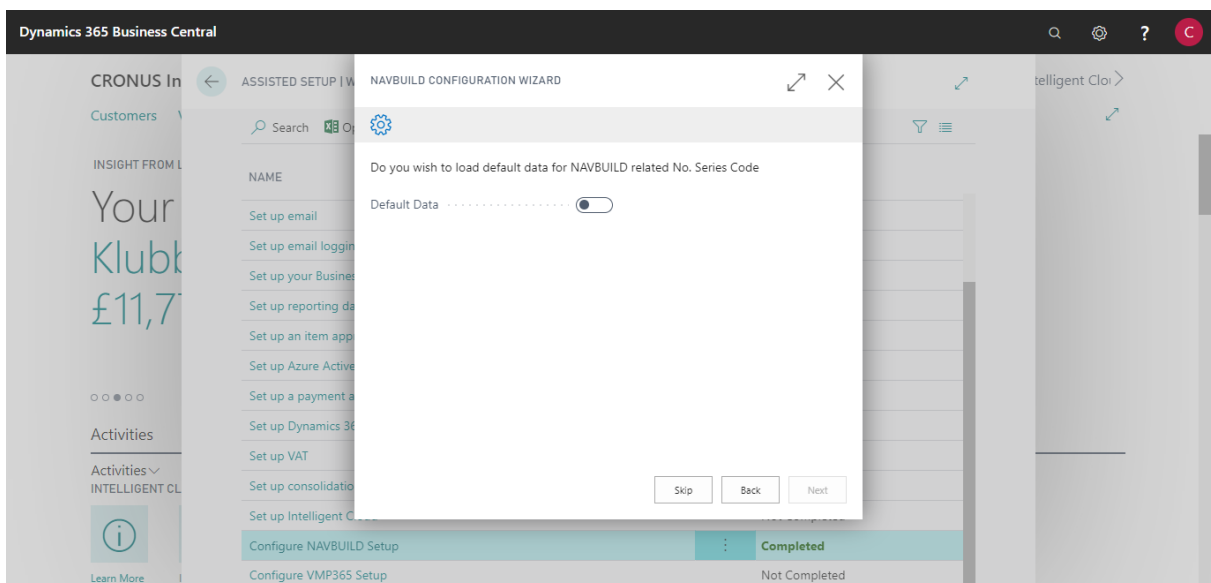
- **Step 2:** Click 'Configure NAVBUILD Setup' to open setup page



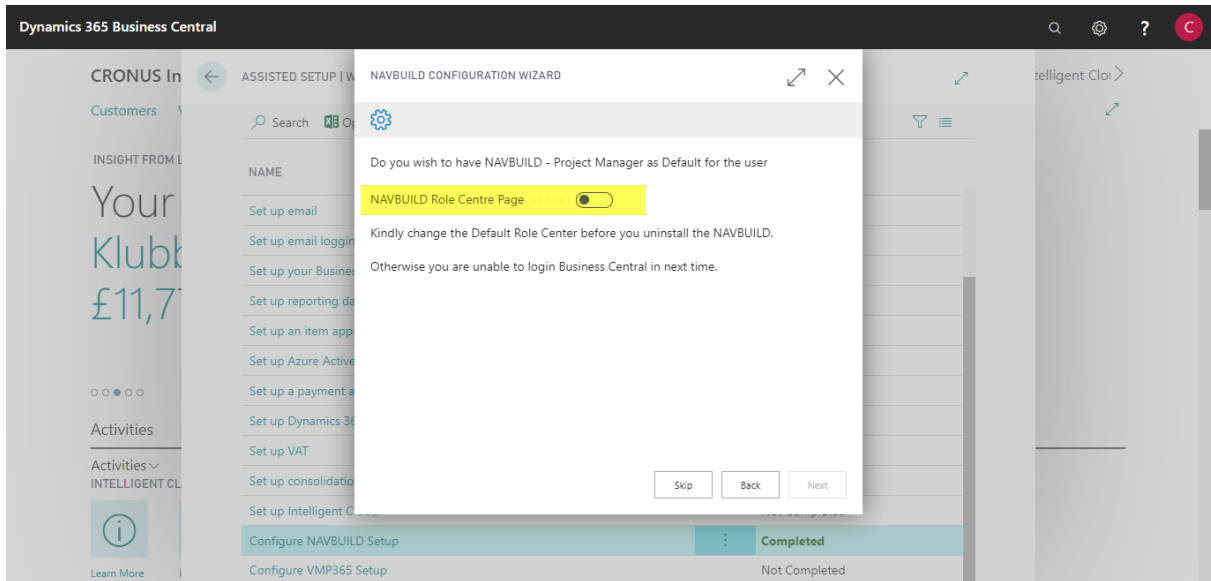
- **Step 3:** To proceed with NAVBUILD setup click 'Next' to continue



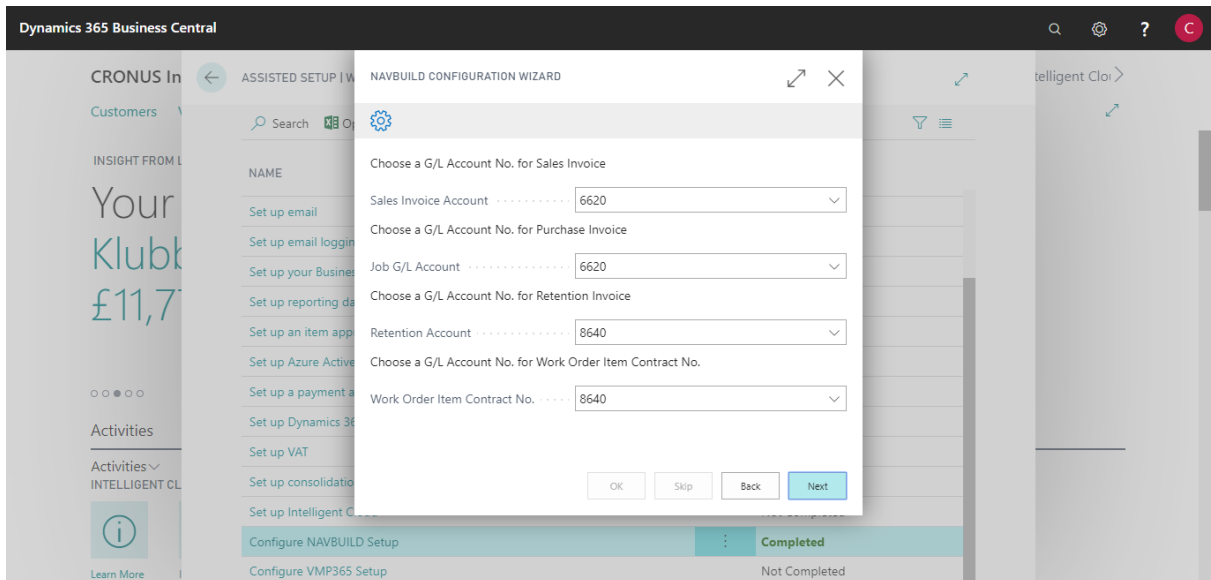
- **Step 4:** Select if default data need to load for the NAVBUILD No. series, If not select skip for this step.



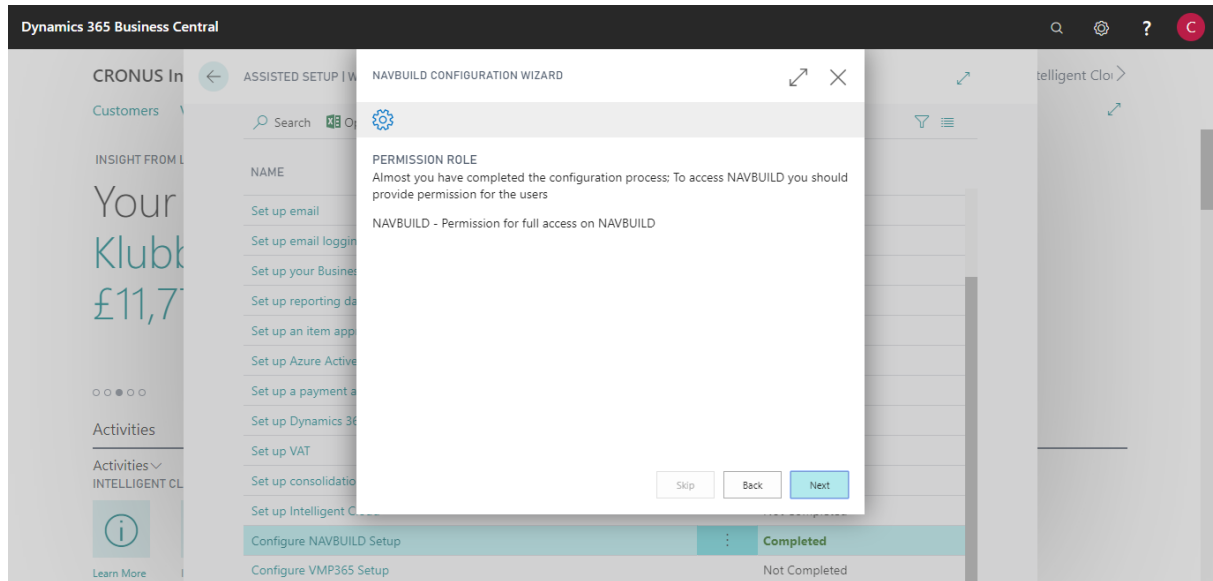
- **Step 5:** Choose 'NAVBUILD Role Centre Page' if you need to set NAVBUILD Role Centre as default and click Next to proceed.



- **Step 6:** Choose G/L Account No. for sales invoices and click Next to proceed



- **Step 7:** To access NAVBUILD pages user needs permission, this page contains the details about permissions to be set to user read it and click Next to continue



- **Step 8:** Finally, click Finish button to complete NAVBUILD Configuration Setup

